



MONTHLY MEMBERSHIP PROGRESS REPORT

District 201W2

Results as of: 09/30/2017

GMT: WAYNE OAKES

LOCATION AUSTRALIA

GMT CA

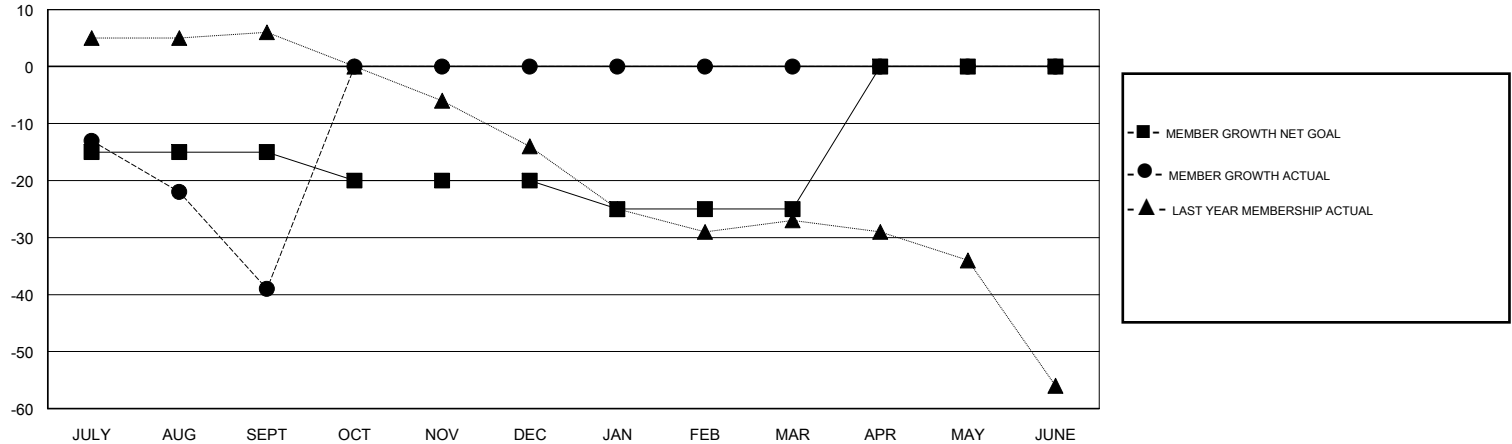
Clubs			
RESULTS FOR 2017-2018			
QUARTER	NEW CLUB GOAL	NEW CLUBS	DROPPED CLUBS
JULY/AUG/SEPT	0	0	1
OCT/NOV/DEC	0	0	0
JAN/FEB/MAR	0	0	0
APR/MAY/JUNE	0	0	0

Members			
RESULTS FOR 2017-2018			
QUARTER	MEMBER GROWTH NET GOAL	MEMBER GROWTH ACTUAL	DROPPED MEMBERS ACTUAL (including transfers)
JULY/AUG/SEPT	-15	18	57
OCT/NOV/DEC	-5	0	0
JAN/FEB/MAR	-5	0	0
APR/MAY/JUNE	25	0	0

GOALS AND ACTUAL NEW CLUBS CUMULATIVE



GOALS AND ACTUAL MEMBERS CUMULATIVE



DROPPED CLUBS: 1	13 CLUBS OF 66 ADDED 1 OR MORE NEW MEMBERS	<u>GENDER DISTRIBUTION</u> MALE 966 (68.51%) FEMALE 444 (31.49%) Women Percentage Fiscal Year Goal: 50%
<u>DROPPED MEMBERS</u>	CLICK HERE FOR CUMULATIVE MEMBERSHIP DATA	TOTAL FAMILY UNIT MEMBERS 232
DECEASED 1		FAMILY MEMBERS PAYING HALF DUES 117
CLUB CANCELLED 0		
OTHER 56		
TOTAL 57		